



Hotel Bologna

INCLUSIVE HOTEL

Best Western and L'abilità Onlus

working together to welcome guests with Autism Spectrum Disorders.

Best Western Italia and L'abilità Onlus have launched a project dedicated to guests with Autism Spectrum Disorders.

Inclusive Hotel is the name of the initiative and it aims to guarantee an **absolutely positive** stay in the hotel to people with **Autism Spectrum Disorders**, both children and adults together with their families and their caregivers.

This guide is dedicated to those who want to **start travelling again**.

The **services** and **strategies** listed in the guide are helpful in organising the trip and ensure a positive and welcoming experience in the hotel, guaranteeing a sense of **wellness** and **inclusion**.

To supplement the information provided **Augmentative and Alternative Communication Tables** on the hotel itself and on the destination can be found in the dedicated rooms.

We wish you a pleasant stay.

General Information

The **Best Western Plus Hotel Bologna** is located in **Venice Mestre** in **Via Piave 214**.

The hotel staff has been **trained** and is **aware** of the characteristics of people with **autism spectrum disorders**, of their special needs, and knows how to make the hotel **fully inclusive**.

Marco Cecchinato Tura is responsible for the **Inclusive Hotel** project at **Best Western Plus Hotel Bologna**.

You can contact him by e-mail at marco.cecchinato@hotelbologna.com or by phone on +39 041 93 1000.

Do not hesitate to contact him:

- for more information
- to book a room that is adequate to the needs of a person with ASD
- to communicate any special needs
- to communicate your time of arrival



Check-In and Check-Out

The lobby of the **Best Western Plus Hotel Bologna** has brown sofas and armchairs in the waiting area.

There is an automatic door to enter the hotel. On the left, there is an illuminated Reception desk with two workstations. In front of the desk, between the two lifts, there is a showcase with souvenirs from Venice.

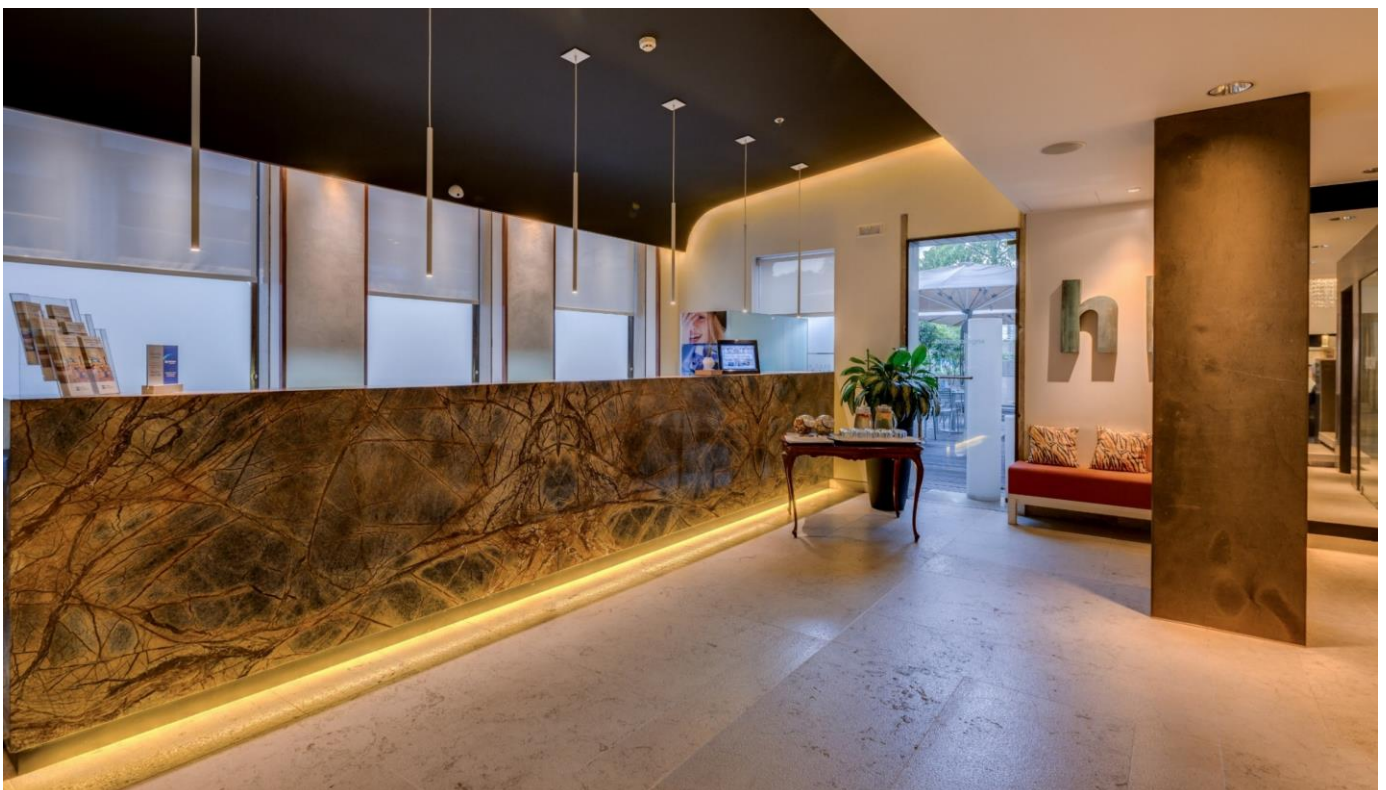
The lobby is 80 sqm and at peak times **crowding** and **increased waiting times** could induce **sensory overload**.

During the day, the most crowded times are:

- between 08:00am and 10:00am
- between 06:00pm and 08:00pm

It is therefore advisable to check-in and check-out outside those hours.

- Check-in starts at 02:00pm
- Check-out is until 12:00pm

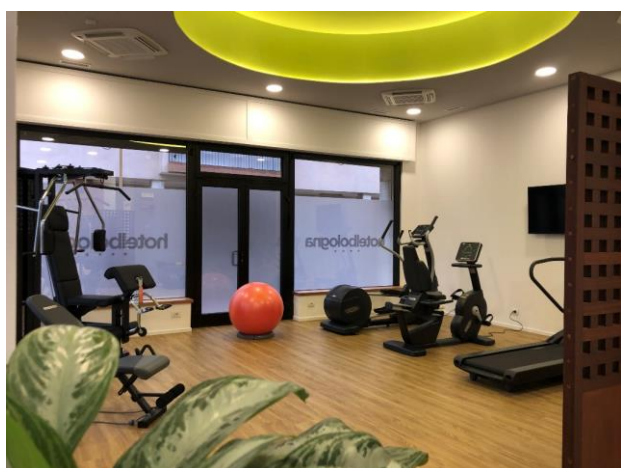


Common areas

☞ No neon lighting.

🎵 There is volume background music.

spaces	location	characteristics
Lobby	Ground Floor	<ul style="list-style-type: none"> • 1 internet point with monitor, keyboard, mouse, and printer • 1 bookcase • 1 TV available to clients, switched off • 2 TVs with hotel signs, always on but muted • 2 lifts
Bathroom	Ground Floor	<ul style="list-style-type: none"> • Automatic sink faucet in the bathroom access room • Automatic diffuser • Electric hand dryer
Restaurant	Ground Floor	<ul style="list-style-type: none"> • Tables with white runners and napkins • Green plants • Open every day for lunch and dinner
Fitness Room	Ground Floor	<ul style="list-style-type: none"> • Access via dedicated lift • Technogym equipment (multi-functional machine, treadmill, stationary bicycle), fitball and weights
Bar	Ground Floor	<ul style="list-style-type: none"> • Located between the restaurant and the lobby • Illuminated white counter • Dedicate area with tables, grey tablemats, and red napkins



Room

The rooms dedicated to clients with ASD are equipped with features that can **help** in the case of **atypical sensory reactivity**:

- there are no neon lights but soft lighting
- the room is located far from noise sources
- cleaning products are fragrance free
- air fresheners are not used

The **bedding** is white, with a black and brown striped runner. A duvet is available to guests. For specific needs, guests are allowed to bring with them their own **personal items (blankets or cushions)**, and the staff will make the bed.

There is a hopper window, and the room can be blacked out entirely by drawing the curtains.

Guests must use a keycard to access the room, also necessary to turn on the lights.

In the room, there is a lightbox behind the bed, a desk, a minibar with snacks and drinks, a closed wooden wardrobe, a television, and a full-length mirror.

There is parquet floor. On the bedside table, there are a phone, a notepad, and a pen.

The bathroom has a bathtub.

For **room service** please dial 640.

Please contact 99 for any **assistance** you may need.

You will also find augmentative and alternative communication material in your room concerning:

- Breakfast menu
- Rules of behaviour
- Communication tables
- An information sheet on Venice and its surroundings



Restaurant

The “Da Tura” restaurant is located inside the Best Western Plus Hotel Bologna.

A table will be reserved for you in an area of the restaurant free from anything that could induce sensory processing disorder, away from busy passageways.

At the restaurant:

- Lunch is served from 12:00pm to 02:30pm
- Dinner is served from 07:00pm to 10:00pm

The times of **increased client influx**, that may lead to a higher risk of sensory overload are from 08:00pm to 09:00pm.

Background music is played at a very low volume.

Guests can bring their **own food and drink** at the table.

If you communicate any **special needs** in advance, the hotel kitchen will do their best to satisfy your requests.



Breakfast Room

Breakfast is served in the “Da Tura” restaurant.

A table will be reserved for you in an area of the restaurant free from anything that could induce sensory processing disorder, away from busy passageways.

Breakfast is served from 7:00am to 10:00am.

The times of **increased client influx**, that may lead to a higher risk of sensory overload are from 08:30am to 10:00am.

Background music is played at a very low volume.

Guests can bring their **own food and drink** at the table.

If you communicate any **special needs** in advance, the hotel kitchen will do their best to satisfy your requests.

You will also find in your room, the breakfast menu with **augmentative and alternative communication** symbols.



Hotel Information

The Best Western Plus Hotel Bologna is located near Venice, in front of the Venezia Mestre railway station, just 10 minutes away from Venice's historic centre and the Grand Canal. The ideal starting point for many exciting trips: the Venetian Villas of the Brenta Riviera, Padua, Vicenza, Verona, or the charming hills near Treviso.

The hotel has a comfortable charged car park, the "Da Tura" restaurant that offers the genuine flavours of Venetian cuisine, and a brand-new fitness room with Technogym equipment.